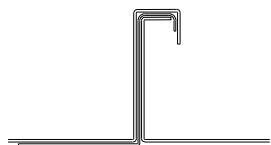
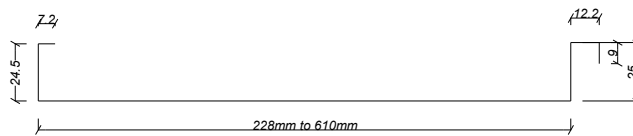


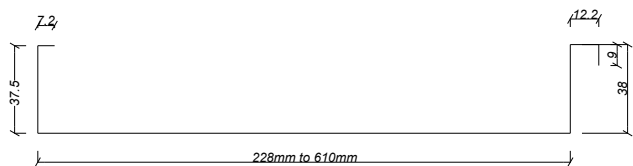
ISOMETRIC VIEW



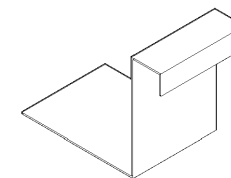
STANDING SEAM



CROSS SECTION (25mm)



CROSS SECTION (38mm)



FIXING CLIP



ARCHITECTURAL
METALFORMERS

smart tray™ Roofing & Cladding

Profile Type:

Standing Seam
Smart Tray System Drawings

Scale: NTS
Date: 2025

Drawing No.

SS-01

Revision:

A

VENT HOLES IN UNDERLAY PROVIDING 1000mm² OF VENTILATION PER LINEAL METRE.

METAL RIDGE/HIP FLASHING BY **ARCHITECTURAL METALFORMERS**.

METAL TRIM FLASHING BY **ARCHITECTURAL METALFORMERS**. FIX TO END CAP FLASHING WITH RIVETS @ 250mm C/C.

15mm H3 CCA TREATED PLYWOOD SHEATHING FIXED TO ARCHITECTS AND MANUFACTURERS SPECIFICATION.

TIMBER PURLINS WITH VENTILATION GROOVES TO ARCHITECTS SPECIFICATION.

METAL END CAP FLASHING BY **ARCHITECTURAL METALFORMERS**. FIX TO PLYWOOD WITH 19MM S/S ANNULAR GROOVED NAILS @ 200mm C/C. PUNCH VENT HOLES IN END CAP TO PROVIDING 1000mm² OF VENTILATION PER LINEAL METRE.

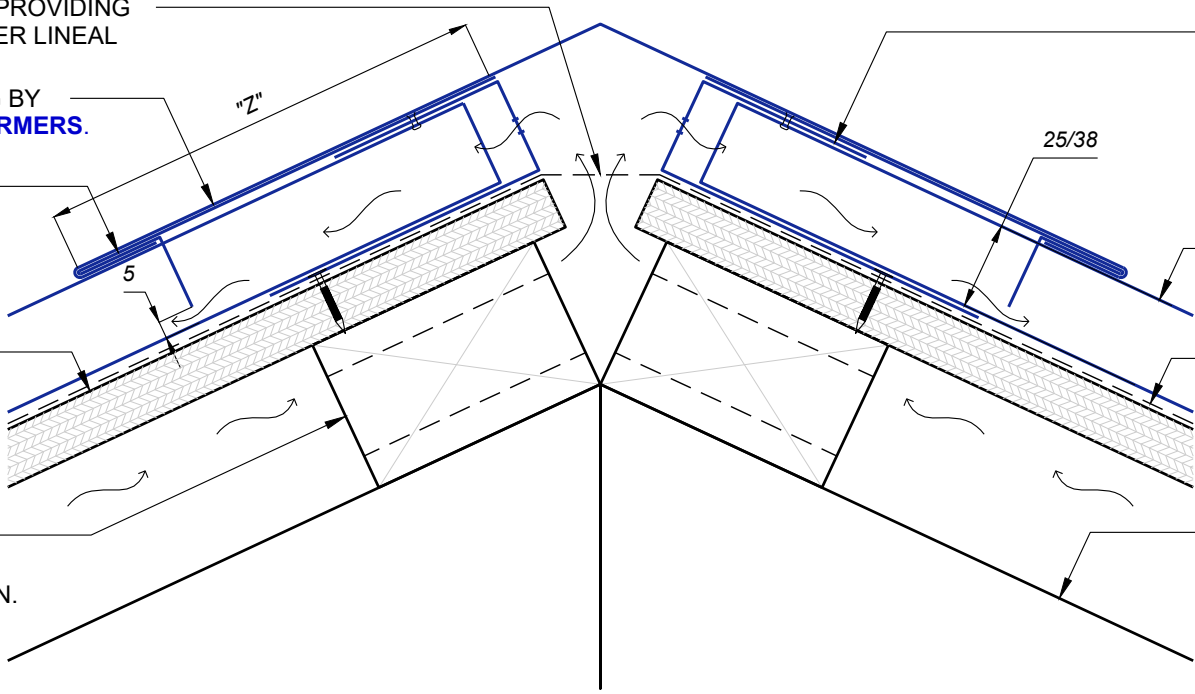
STANDING SEAM METAL ROOF PANEL BY **ARCHITECTURAL METALFORMERS**.

SELECTED COVERTEK ROOFING UNDERLAY BY **ARCHITECTURAL METALFORMERS**. LAY OVER PLYWOOD SHEATHING TO MANUFACTURERS SPECIFICATION.

TIMBER RAFTER/TRUSS TO ARCHITECTS SPECIFICATION.

"Z" as per Table 7 NZBC E2/AS1

- 130mm width in Low, Medium, High Wind Zones, where roof pitch $\geq 10^\circ$.
- 200mm width for all roof pitches in Very High and Extra High Wind Zones.
- 200mm width in Low, Medium and High Wind Zones where roof pitch $\leq 10^\circ$.



ARCHITECTURAL
METALFORMERS

smart tray™ Roofing & Cladding

Profile Type:		Standing Seam Roof Hip & Ridge Flashing (Vented)	
Scale:	NTS	Drawing No.	SS-50
Date:	2025	Revision:	A

ROOFING UNDERLAY LAPS ONTO DRIP EDGE FLASHING WITH 75mm MIN. COVER.

METAL DRIP EDGE FLASHING BY **ARCHITECTURAL METALFORMERS** LAID ON SELECTED COVERTEK UNDERLAY. FIX TO PLYWOOD WITH 19mm S/S ANNULAR GROOVED NAILS @ 200mm C/C.

SELECTED METAL SPOUTING BY **ARCHITECTURAL METALFORMERS** LAID TO FALLS.

STANDING SEAM METAL ROOF PANEL BY **ARCHITECTURAL METALFORMERS** ON SELECTED COVERTEK UNDERLAY.

15mm H3 CCA TREATED PLYWOOD FIXED TO MANUFACTURERS SPECIFICATION.

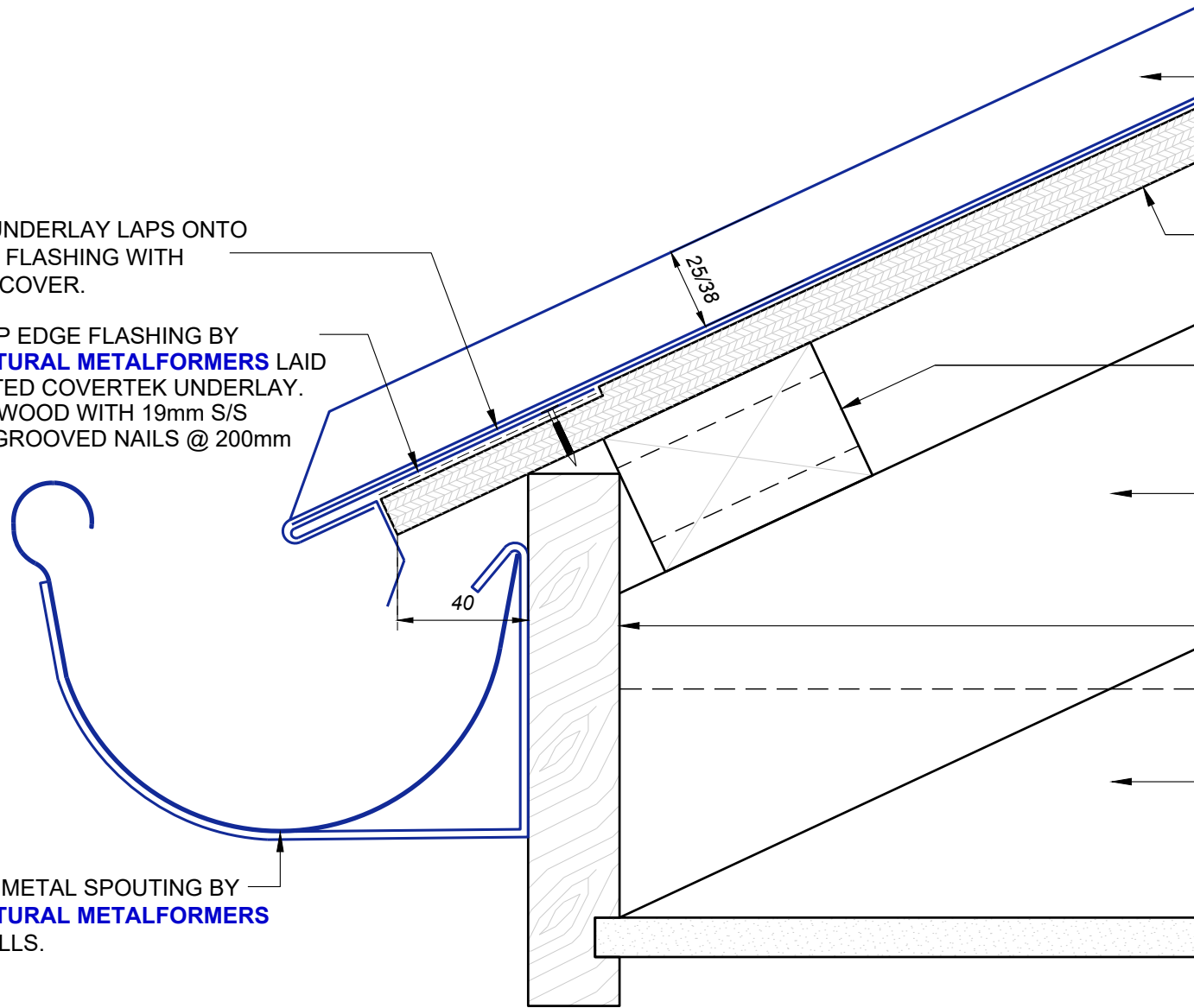
TIMBER PURLINS WITH VENTILATION GROOVES TO ARCHITECTS SPECIFICATION.

TIMBER RAFTER/TRUSS TO ARCHITECTS SPECIFICATION.

TIMBER FASCIA TO ARCHITECTS SPECIFICATION.

TIMBER SOFFIT BEARER TO ARCHITECTS SPECIFICATION.

SELECTED SOFFIT LININGS TO ARCHITECTS SPECIFICATION.



ARCHITECTURAL
METALFORMERS

smart tray™ Roofing & Cladding

Profile Type:	Standing Seam Roof Drip Edge Flashing (Unvented)		
Scale:	NTS	Drawing No.	SS-51
Date:	2025	Revision:	A

SELECTED METAL TRIM FLASHING BY **ARCHITECTURAL METALFORMERS** FIXED WITH 19mm S/S ANNULAR GROOVED NAILS.

STANDING SEAM METAL ROOF PANEL BY **ARCHITECTURAL METALFORMERS** ON SELECTED COVERTEK UNDERLAY.

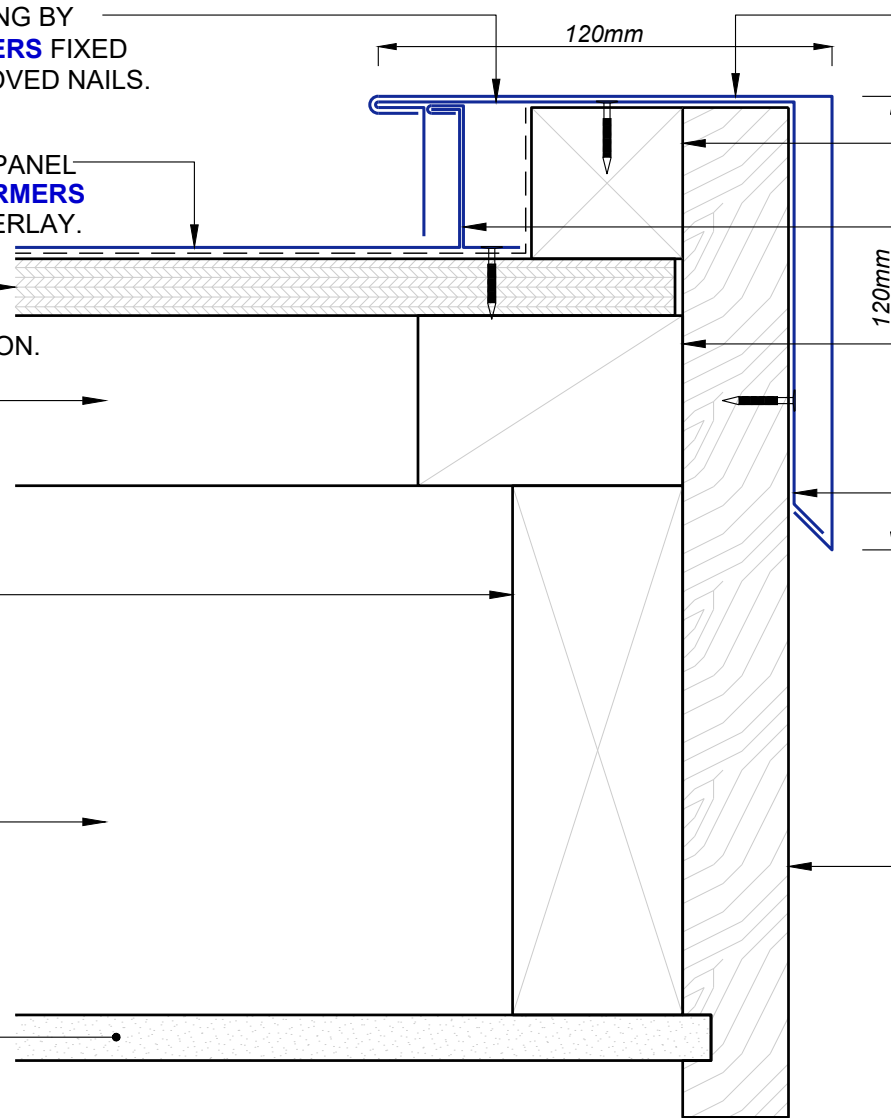
15mm H3 CCA TREATED PLYWOOD FIXED TO MANUFACTURERS SPECIFICATION.

TIMBER PURLINS TO ARCHITECTS SPECIFICATION.

TIMBER FLYING RAFTER TO ARCHITECTS SPECIFICATION.

TIMBER OUTRIGGER TO ARCHITECTS SPECIFICATION.

SELECTED SOFFIT LININGS TO ARCHITECTS SPECIFICATION.



SELECTED METAL BARGE FLASHING BY **ARCHITECTURAL METALFORMERS** FIXED OVER CONCEALED CLIP FIXINGS.

40 X 40 TIMBER BATTEN FIXED TO PLYWOOD TO ARCHITECTS SPECIFICATION.

S/S BRACKET FIXED WITH 19mm S/S ANNULAR GROOVED NAILS.

TIMBER NOGGING AS REQUIRED TO ARCHITECTS SPECIFICATION.

SELECTED METAL TRIM FLASHING BY **ARCHITECTURAL METALFORMERS** FIXED WITH 19mm S/S ANNULAR GROOVED NAILS.

TIMBER BARGE BOARD TO ARCHITECTS SPECIFICATION.



ARCHITECTURAL
METALFORMERS

smart tray™ Roofing & Cladding

Profile Type:		Standing Seam Roof Barge Detail (Option A)	
Scale:	NTS	Drawing No.	SS-52
Date:	2025	Revision:	A

S/S METAL TRIM FLASHING BY **ARCHITECTURAL METALFORMERS** FIXED WITH 19mm S/S ANNULAR GROOVED NAILS.

STANDING SEAM METAL ROOF PANEL BY **ARCHITECTURAL METALFORMERS** ON SELECTED COVERTEK UNDERLAY.

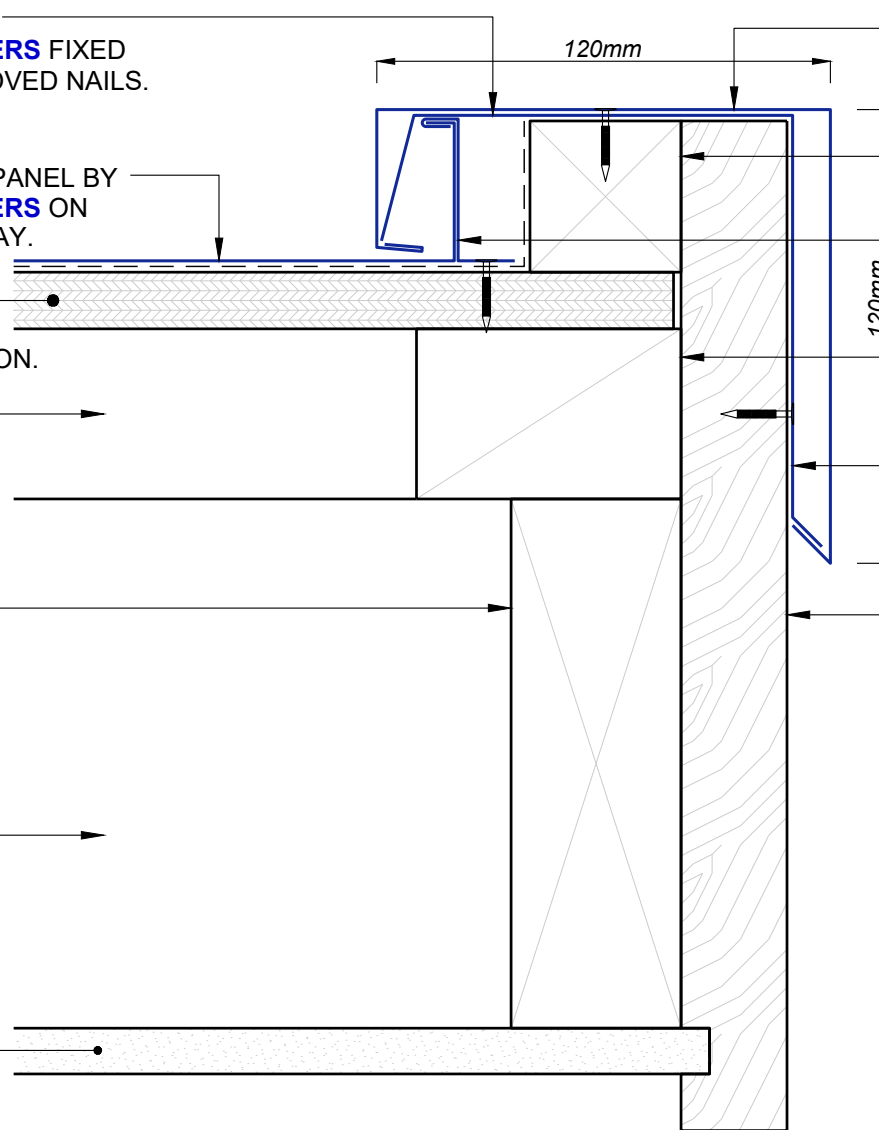
15mm H3 CCA TREATED PLYWOOD FIXED TO MANUFACTURERS SPECIFICATION.

TIMBER PURLINS TO ARCHITECTS SPECIFICATION.

TIMBER FLYING RAFTER TO ARCHITECTS SPECIFICATION.

TIMBER OUTRIGGER TO ARCHITECTS SPECIFICATION.

SELECTED SOFFIT LININGS TO ARCHITECTS SPECIFICATION.



SELECTED METAL BARGE FLASHING BY **ARCHITECTURAL METALFORMERS** FIXED OVER CONCEALED CLIP FIXINGS.

40 X 40 TIMBER BATTEN FIXED TO PLYWOOD TO ARCHITECTS SPECIFICATION.

S/S BRACKET FIXED WITH 19mm S/S ANNULAR GROOVED NAILS.

TIMBER NOGGING AS REQUIRED TO ARCHITECTS SPECIFICATION.

S/S METAL TRIM FLASHING BY **ARCHITECTURAL METALFORMERS** FIXED WITH 19mm S/S ANNULAR GROOVED NAILS.

TIMBER BARGE BOARD TO ARCHITECTS SPECIFICATION.



ARCHITECTURAL
METALFORMERS

smart tray™ Roofing & Cladding

Profile Type:		Standing Seam Roof Barge Detail (Option B)	
Scale:	NTS	Drawing No.	SS-53
Date:	2025	Revision:	A

S/S BRACKET FIXED WITH 19mm
S/S ANNULAR GROOVED NAILS.

STANDING SEAM METAL ROOF
PANEL BY **ARCHITECTURAL
METALFORMERS** ON SELECTED
COVERTEK UNDERLAY.

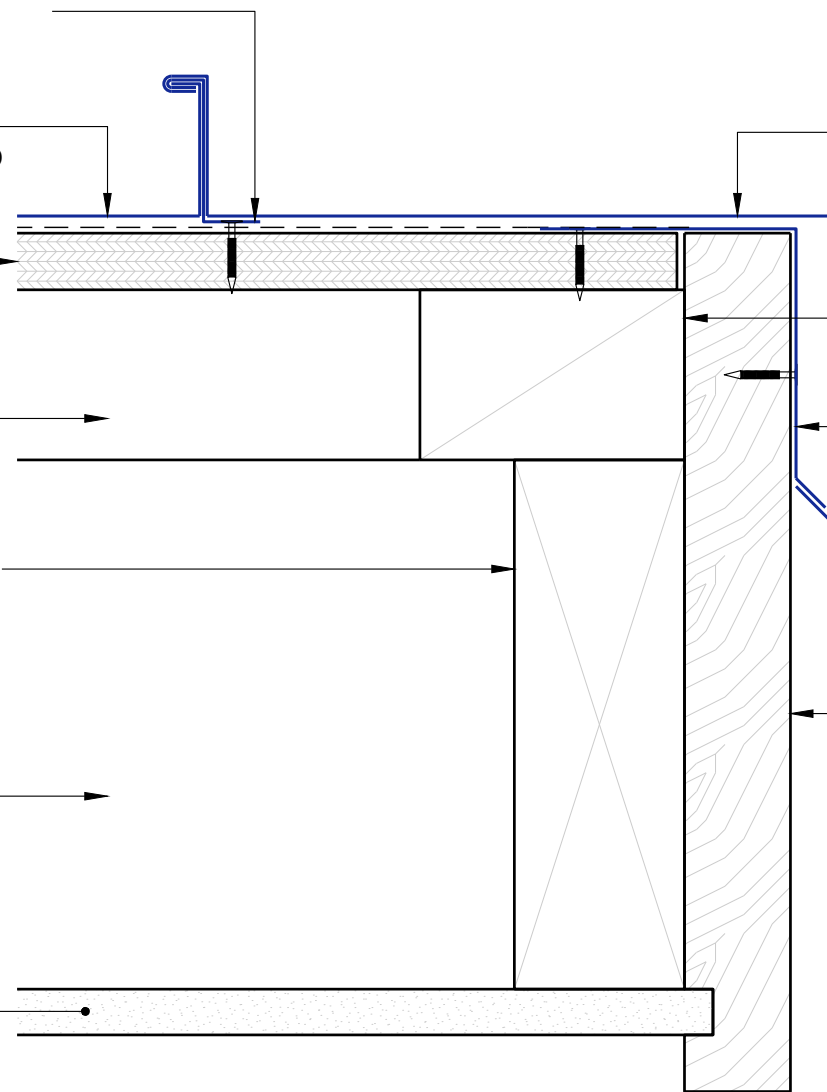
15mm H3 CCA TREATED
PLYWOOD FIXED TO
MANUFACTURERS
SPECIFICATION.

TIMBER PURLINS TO
ARCHITECTS SPECIFICATION.

TIMBER FLYING RAFTER TO
ARCHITECTS SPECIFICATION.

TIMBER OUTRIGGER TO
ARCHITECTS SPECIFICATION.

SELECTED SOFFIT LININGS TO
ARCHITECTS SPECIFICATION.



SELECTED METAL BARGE
FLASHING BY **ARCHITECTURAL
METALFORMERS** FIXED OVER
CONCEALED CLIP FIXINGS.

TIMBER NOGGING AS REQUIRED
TO ARCHITECTS SPECIFICATION.

SELECTED METAL TRIM
FLASHING BY **ARCHITECTURAL
METALFORMERS** FIXED WITH
19mm S/S ANNULAR GROOVED
NAILS.

TIMBER BARGE BOARD TO
ARCHITECTS SPECIFICATION.



ARCHITECTURAL
METALFORMERS

smart tray™ Roofing & Cladding

Profile Type:

Standing Seam Roof
Barge Detail (Option C)

Scale:

NTS

Drawing No.

SS-54

Revision:

Date:

2025

A

STANDING SEAM METAL WALL CLADDING BY **ARCHITECTURAL METALFORMERS** ON SELECTED COVERTEK UNDERLAY.

45 X 20mm H3.1 TREATED CAVITY BATTENS.

15mm H3 CCA TREATED PLYWOOD.

SELECTED BREATHER TYPE BUILDING WRAP TURNS OUT OVER APRON FLASHING.

50 X 3mm PLY REBATE.

FOLDED CAVITY CLOSER/PANEL STARTER BY **ARCHITECTURAL METALFORMERS**. PUNCHED CAVITY CLOSER PROVIDES 1000mm² OF VENTILATION PER LINEAL METRE.

METAL APRON FLASHING BY **ARCHITECTURAL METALFORMERS** WITH 110mm MIN UPSTAND UP WALL BEHIND CLADDING.

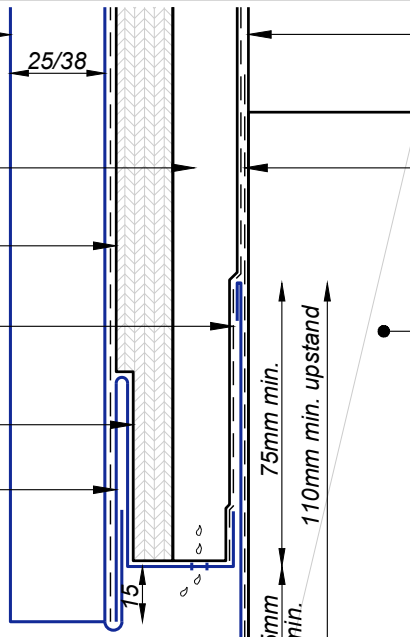
METAL TRIM FLASHING BY **ARCHITECTURAL METALFORMERS**. FIX TO END CAP FLASHING WITH RIVETS @ 250mm C/C.

STANDING SEAM METAL ROOF PANEL BY **ARCHITECTURAL METALFORMERS**.

5MM MIN. GAP TO NOTCHED TURN-DOWN.

SELECTED COVERTEK ROOFING UNDERLAY BY **ARCHITECTURAL METALFORMERS** TURNS UP WALL FACE 200mm MIN. LAY OVER PLYWOOD SHEATHING TO MANUFACTURERS SPECIFICATION.

TIMBER PURLINS WITH VENTILATION GROOVES TO ARCHITECTS SPECIFICATION.



LINE OF TIMBER FRAMING TO ARCHITECTS SPECIFICATION.

SELECTED COVERTEK ROOFING UNDERLAY BY **ARCHITECTURAL METALFORMERS** TURNS UP WALL FACE 200mm MIN.

TIMBER NOG AS REQUIRED TO ARCHITECTS SPECIFICATION.

"Z" as per Table 7 NZBC E2/AS1

- 130mm width in Low, Medium, High Wind Zones, where roof pitch $\geq 10^\circ$.
- 200mm width for all roof pitches in Very High and Extra High Wind Zones.
- 200mm width in Low, Medium and High Wind Zones where roof pitch $\leq 10^\circ$.

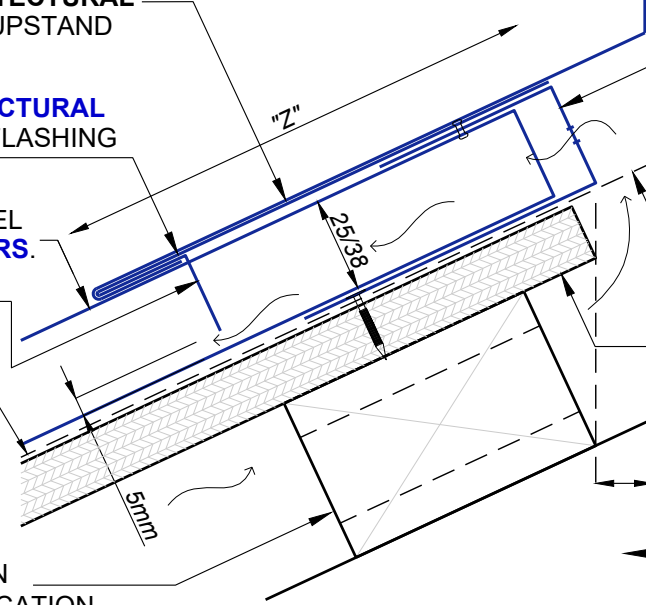
METAL END CAP FLASHING BY **ARCHITECTURAL METALFORMERS**. FIX TO PLYWOOD WITH 19MM S/S ANNULAR GROOVED NAILS @ 200mm C/C. PUNCH VENT HOLES IN END CAP PROVIDING 1000mm² OF VENTILATION PER LINEAL METRE.

VENT HOLES IN UNDERLAY PROVIDING 1000mm² OF VENTILATION PER LINEAL METRE.

15mm H3 CCA TREATED PLYWOOD SHEATHING FIXED TO ARCHITECTS AND MANUFACTURERS SPECIFICATION.

LINE OF TIMBER FRAMING TO ARCHITECTS SPECIFICATION.

TIMBER RAFTER/TRUSS TO ARCHITECTS SPECIFICATION.



ARCHITECTURAL METALFORMERS

smart tray™ Roofing & Cladding

Profile Type:		Standing Seam Roof	
		Apron Flashing (Vented Option A)	
Scale:	NTS	Drawing No.	SS-55
Date:	2025	Revision:	

STANDING SEAM METAL WALL CLADDING BY **ARCHITECTURAL METALFORMERS** ON SELECTED COVERTEK UNDERLAY.

45 X 20mm H3.1 TREATED CAVITY BATTENS.

15mm H3 CCA TREATED PLYWOOD.

SELECTED BREATHER TYPE BUILDING WRAP TURNS OUT OVER APRON FLASHING.

50 X 3mm PLY REBATE.

FOLDED CAVITY CLOSER/PANEL STARTER BY **ARCHITECTURAL METALFORMERS**. PUNCHED CAVITY CLOSER PROVIDES 1000mm² OF VENTILATION PER LINEAL METRE.

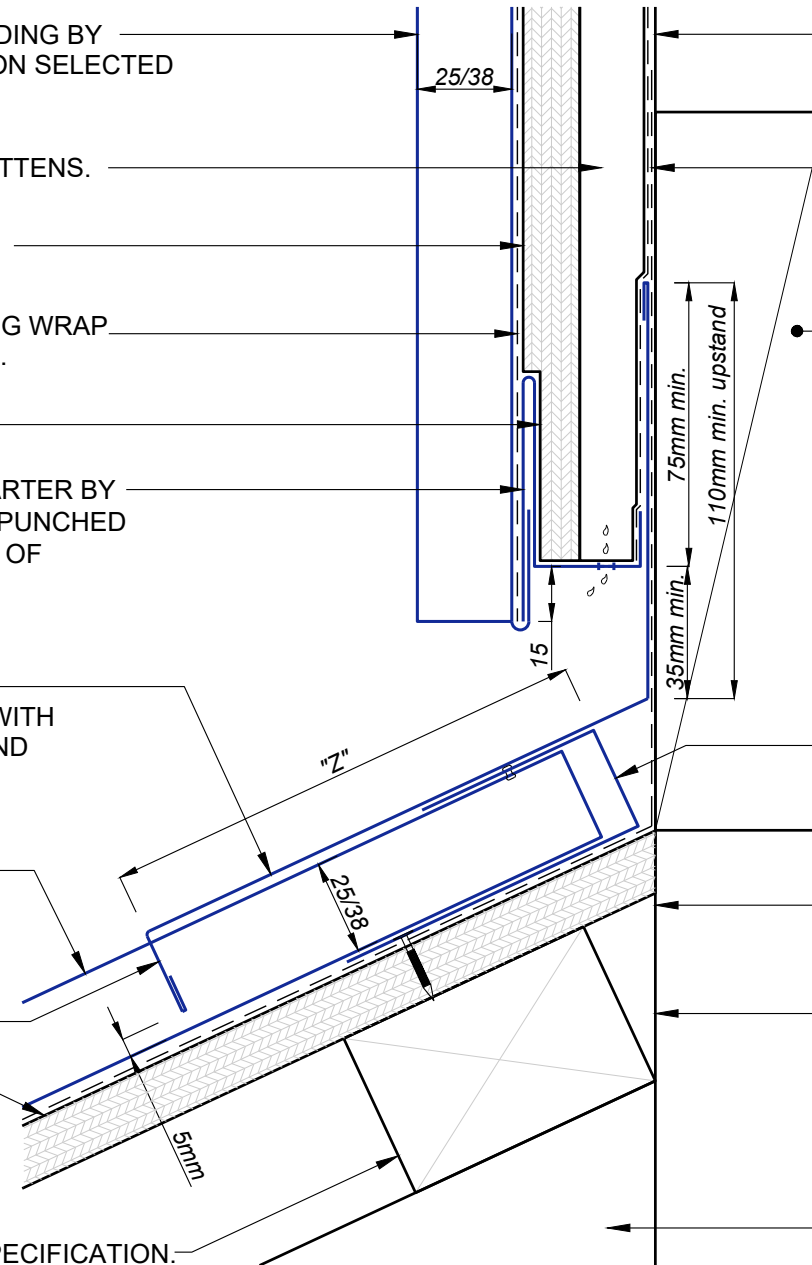
METAL APRON FLASHING BY **ARCHITECTURAL METALFORMERS** WITH 110mm MIN UPSTAND UP WALL BEHIND CLADDING.

STANDING SEAM METAL ROOF PANEL BY **ARCHITECTURAL METALFORMERS**.

5MM MIN. GAP TO NOTCHED TURN-DOWN.

15mm H3 CCA TREATED PLYWOOD SHEATHING FIXED TO ARCHITECTS AND MANUFACTURERS SPECIFICATION.

TIMBER PURLINS TO ARCHITECTS SPECIFICATION.



LINE OF TIMBER FRAMING TO ARCHITECTS SPECIFICATION.

SELECTED COVERTEK ROOFING UNDERLAY BY **ARCHITECTURAL METALFORMERS** TURNS UP WALL FACE 200mm MIN.

TIMBER NOG AS REQUIRED TO ARCHITECTS SPECIFICATION.

"Z" as per Table 7 NZBC E2/AS1

- 130mm width in Low, Medium, High Wind Zones, where roof pitch $\geq 10^\circ$.
- 200mm width for all roof pitches in Very High and Extra High Wind Zones.
- 200mm width in Low, Medium and High Wind Zones where roof pitch $\leq 10^\circ$.

METAL END CAP FLASHING BY **ARCHITECTURAL METALFORMERS**. FIX TO PLYWOOD WITH 19mm S/S ANNULAR GROOVED NAILS @ 200mm C/C.

LINE OF TIMBER FRAMING TO ARCHITECTS SPECIFICATION.

SELECTED COVERTEK ROOFING UNDERLAY BY **ARCHITECTURAL METALFORMERS** TURNS UP WALL FACE 200mm MIN. LAY OVER PLYWOOD SHEATHING TO MANUFACTURERS SPECIFICATION.

TIMBER RAFTER/TRUSS TO ARCHITECTS SPECIFICATION.



ARCHITECTURAL
METALFORMERS

smart tray™ Roofing & Cladding

Profile Type:		Standing Seam Roof	
		Apron Flashing (Unvented Option B)	
Scale:	NTS	Drawing No.	SS-56
Date:	2025	Revision:	

S/S BRACKET FIXED WITH
19mm S/S ANNULAR
GROOVED NAILS.

SELECTED COVERTEK
UNDERLAY.

CLINCHED GRAB STRIP SEALED
WITH SIKA AT FACADE
SEALANT.

TIMBER PURLIN
CONTINUOUS BOTH SIDES
OF COP.

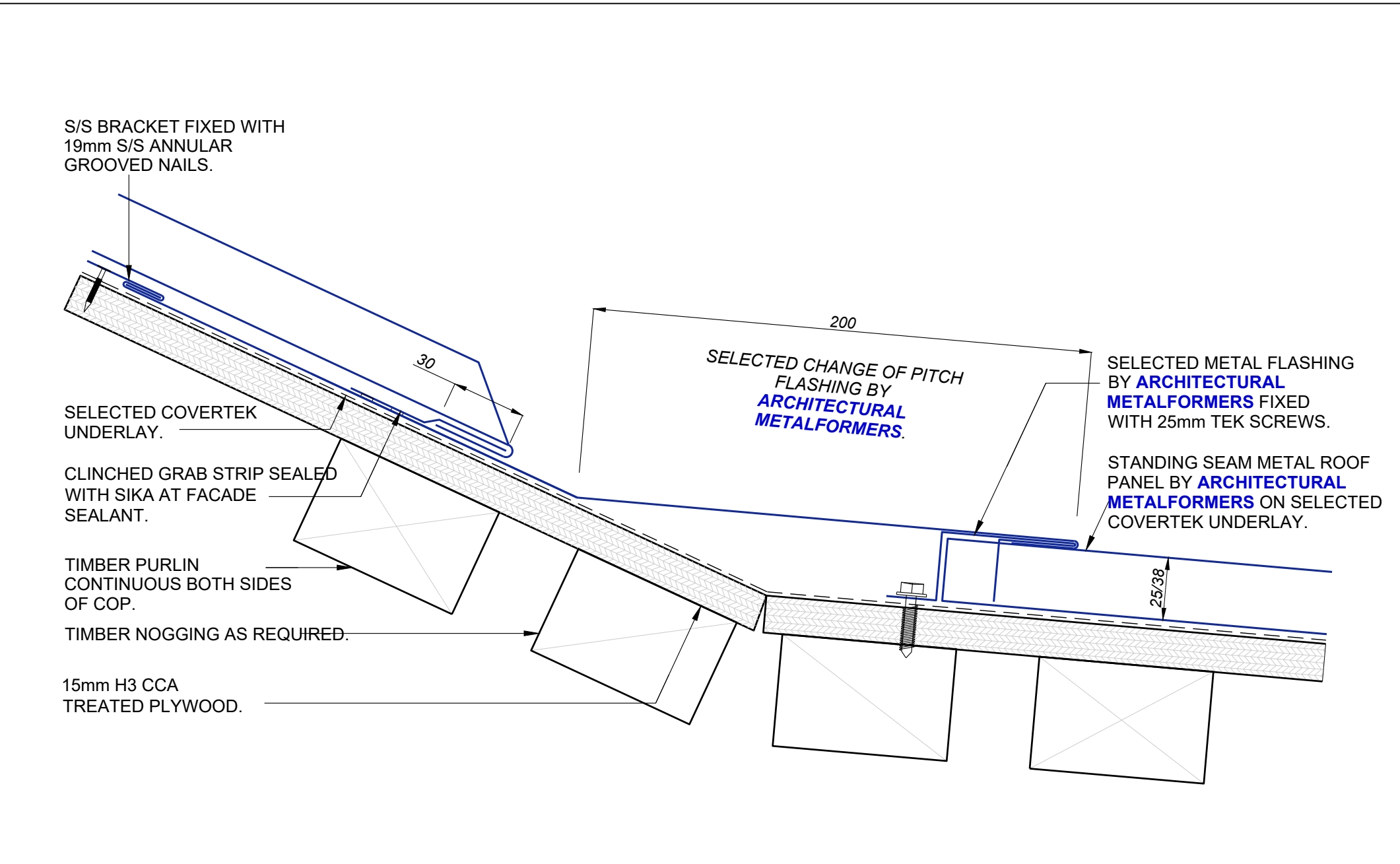
TIMBER NOGGING AS REQUIRED.

15mm H3 CCA
TREATED PLYWOOD.

200
SELECTED CHANGE OF PITCH
FLASHING BY
**ARCHITECTURAL
METALFORMERS.**

SELECTED METAL FLASHING
BY **ARCHITECTURAL
METALFORMERS** FIXED
WITH 25mm TEK SCREWS.

STANDING SEAM METAL ROOF
PANEL BY **ARCHITECTURAL
METALFORMERS** ON SELECTED
COVERTEK UNDERLAY.



ARCHITECTURAL
METALFORMERS

smart tray™ Roofing & Cladding

Profile Type:

Standing Seam Roof
Change of Pitch Flashing

Scale:

NTS

Drawing No.

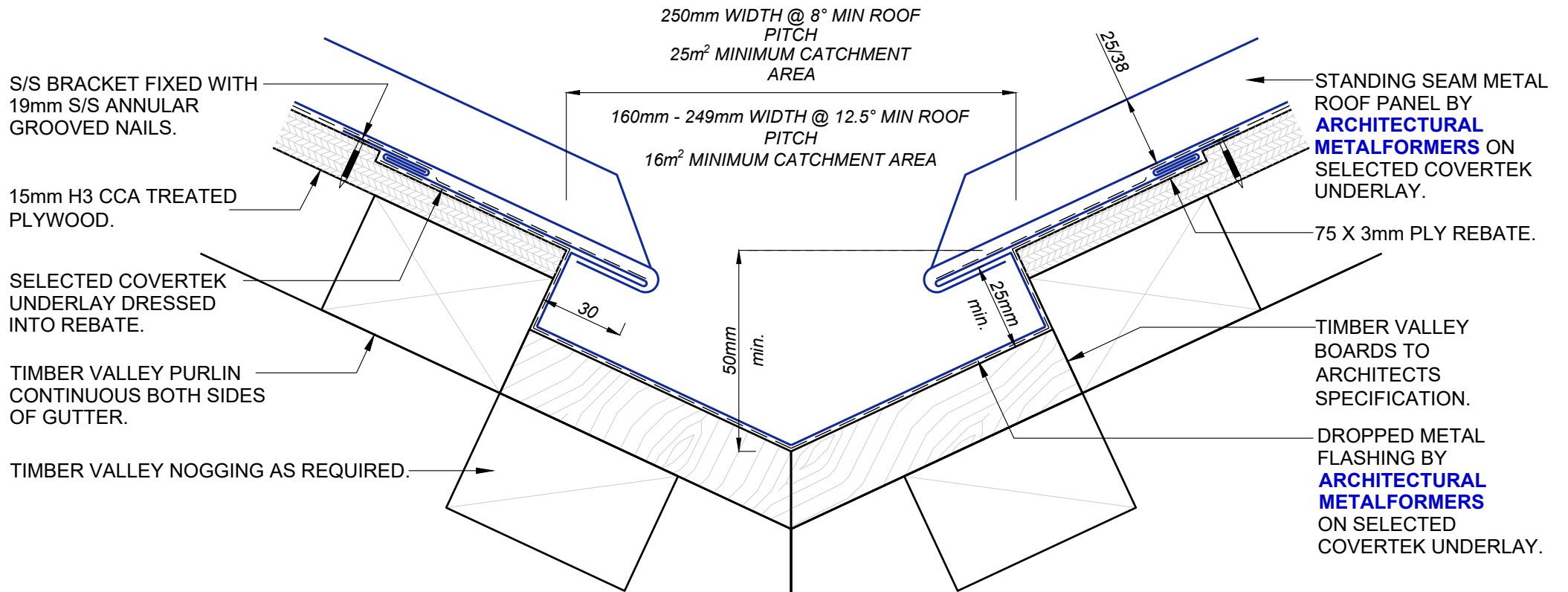
SS-57

Revision:

Date:

2025

A



ARCHITECTURAL
METALFORMERS

smart tray™ Roofing & Cladding

Profile Type:

Standing Seam Roof
Dropped Valley

Scale: NTS

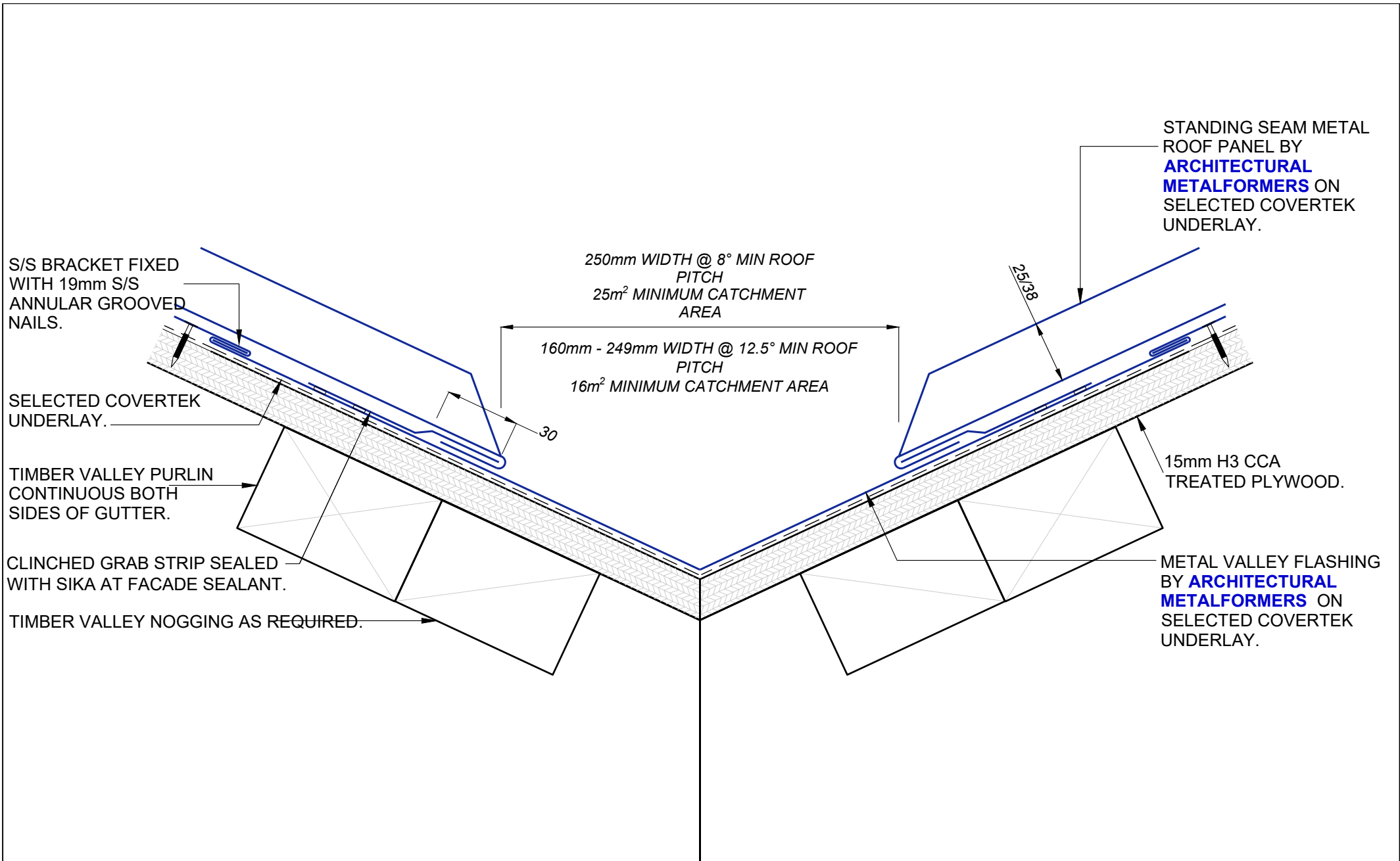
Drawing No.

Date: 2025

SS-58

Revision:

A



ARCHITECTURAL
METALFORMERS

smart tray™ Roofing & Cladding

Profile Type:

Standing Seam Roof
Flat Valley

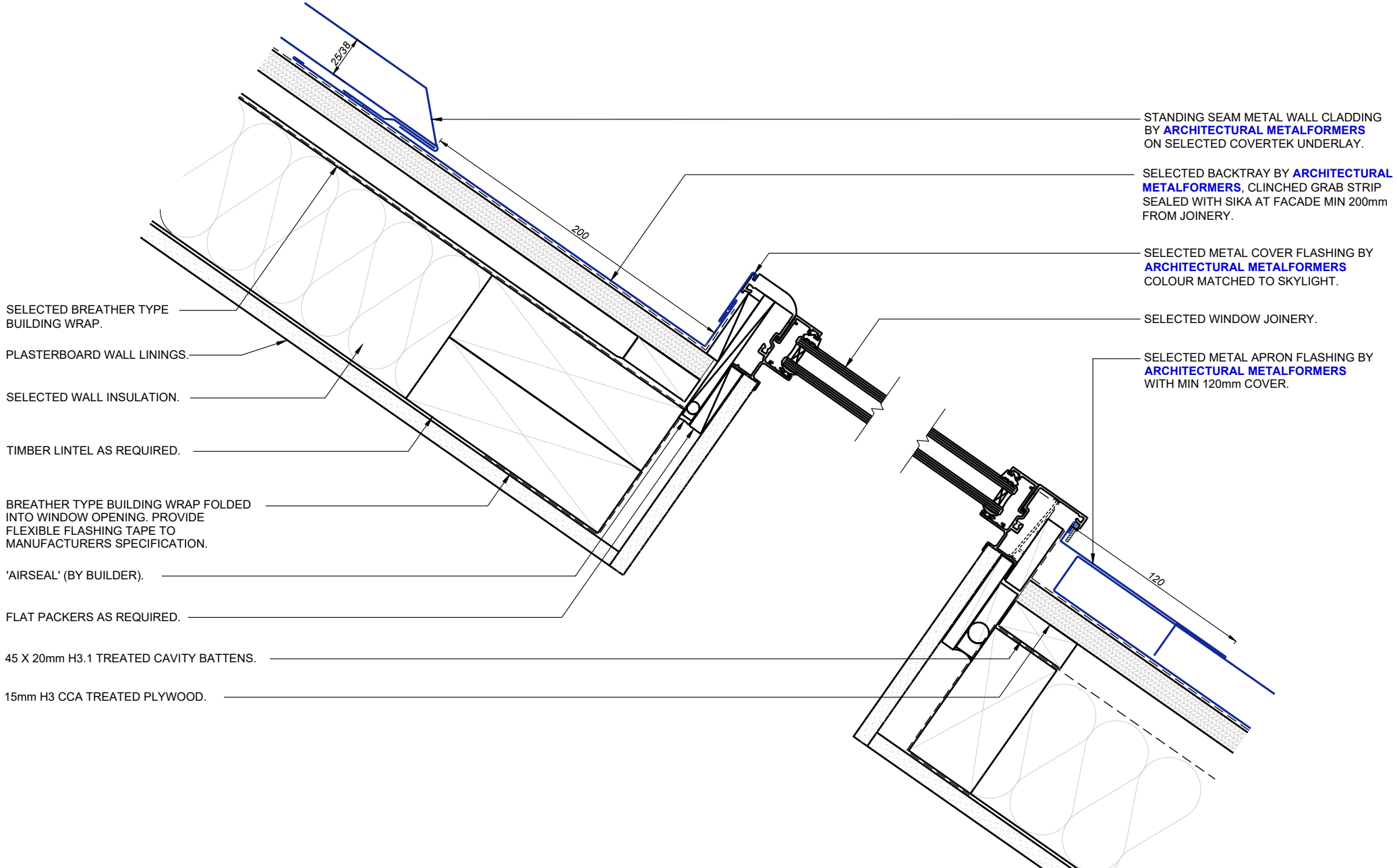
Scale: NTS
Date: 2025

Drawing No.

SS-59

Revision:

A



- SELECTED BREATHER TYPE BUILDING WRAP.
- PLASTERBOARD WALL LININGS.
- SELECTED WALL INSULATION.
- TIMBER LINTEL AS REQUIRED.
- BREATHER TYPE BUILDING WRAP FOLDED INTO WINDOW OPENING. PROVIDE FLEXIBLE FLASHING TAPE TO MANUFACTURERS SPECIFICATION.
- 'AIRSEAL' (BY BUILDER).
- FLAT PACKERS AS REQUIRED.
- 45 X 20mm H3.1 TREATED CAVITY BATTENS.
- 15mm H3 CCA TREATED PLYWOOD.

- STANDING SEAM METAL WALL CLADDING BY ARCHITECTURAL METALFORMERS ON SELECTED COVERTEK UNDERLAY.
- SELECTED BACKTRAY BY ARCHITECTURAL METALFORMERS, CLINCHED GRAB STRIP SEALED WITH SIKA AT FACADE MIN 200mm FROM JOINERY.
- SELECTED METAL COVER FLASHING BY ARCHITECTURAL METALFORMERS COLOUR MATCHED TO SKYLIGHT.
- SELECTED WINDOW JOINERY.
- SELECTED METAL APRON FLASHING BY ARCHITECTURAL METALFORMERS WITH MIN 120mm COVER.



smart tray™ Roofing & Cladding

Profile Type:		Standing Seam Roof Skylight Flashing	
Scale:	NTS	Drawing No.	SS-60
Date:	2025	Revision:	A

Disclaimer: All details are to be used for indicative purposes only and the designer should consult both the MRM code of practice version 2.2 /2012, E2 and all other relevant building codes. Details of the supporting mechanisms are indicative only. Compliance of the supporting mechanisms is the responsibility of the designer. Construction detail can vary for wall cladding. The underlay is detailed as a single line for simplicity and is indicative only. Building paper type and method of installation should comply with underlay manufacturers recommendations and NZBC regulations.

STANDING SEAM METAL ROOF CLADDING IS FOLDED TO HOOK OVER WALL CLADDING (WITH SEAM CONTINUING UNTIL MEETING SEAM OF WALL CLADDING).

STANDING SEAM METAL WALL CLADDING IS FOLDED (WITH SEAM CONTINUING UP TO MEET SEAM OF ROOF CLADDING).

STANDING SEAM METAL WALL CLADDING BY **ARCHITECTURAL METALFORMERS** ON SELECTED COVERTEK UNDERLAY.

25/38

TIMBER FRAMING.

CONTINUOUS 45 X 20mm H3.1 TREATED CAVITY BATTEN.

TIMBER NOG AS REQUIRED.

SELECTED BREATHER TYPE BUILDING WRAP.

15mm H3 CCA TREATED PLYWOOD.



ARCHITECTURAL METALFORMERS

smart tray™ Roofing & Cladding

Profile Type:

Standing Seam Roof
Waterfall Edge (Option A)

Scale: NTS
Date: 2025

Drawing No.

SS-61

Revision:

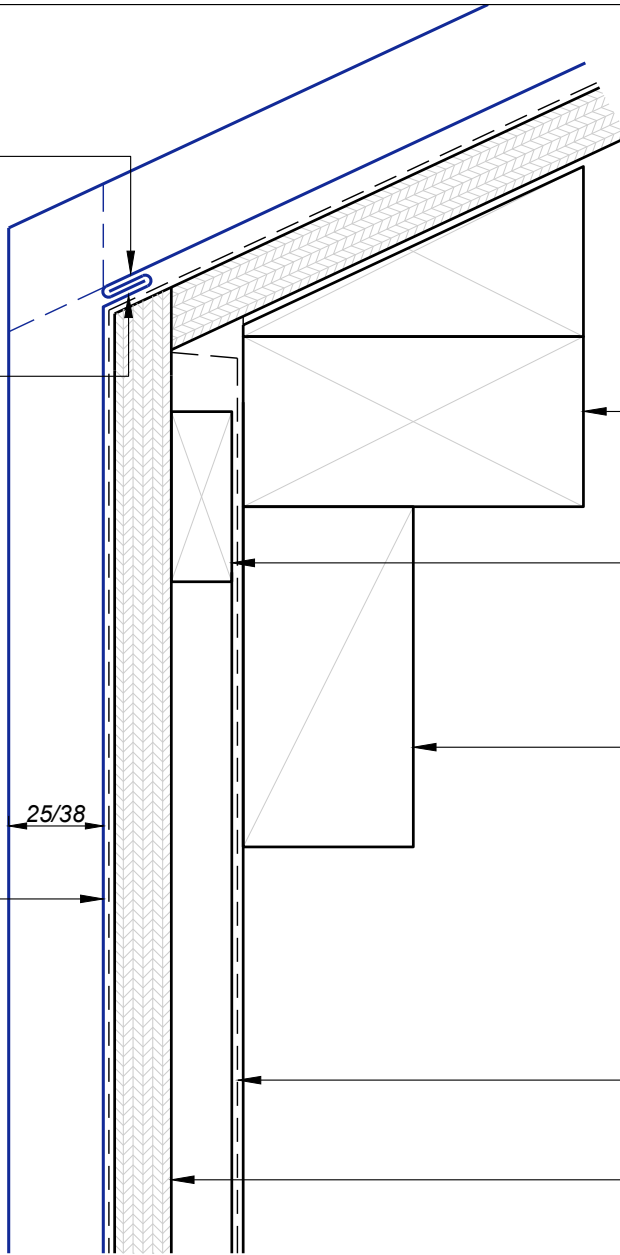
A

STANDING SEAM METAL ROOF CLADDING IS FOLDED TO HOOK OVER WALL CLADDING (WITH SEAM CONTINUING UNTIL MEETING SEAM OF WALL CLADDING).

STANDING SEAM METAL WALL CLADDING IS FOLDED TO CREATE A HOOK (WITH SEAM CONTINUING UP TO MEET SEAM OF ROOF CLADDING).

STANDING SEAM METAL WALL CLADDING BY **ARCHITECTURAL METALFORMERS** ON SELECTED COVERTEK UNDERLAY.

25/38



TIMBER FRAMING.

CONTINUOUS 45 X 20mm H3.1 TREATED CAVITY BATTEN.

TIMBER NOG AS REQUIRED.

SELECTED BREATHER TYPE BUILDING WRAP.

15mm H3 CCA TREATED PLYWOOD.



ARCHITECTURAL
METALFORMERS

smart tray™ Roofing & Cladding

Profile Type:

Standing Seam Roof
Waterfall Edge (Option B)

Scale: NTS
Date: 2025

Drawing No.

SS-62

Revision:

A