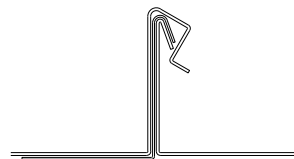
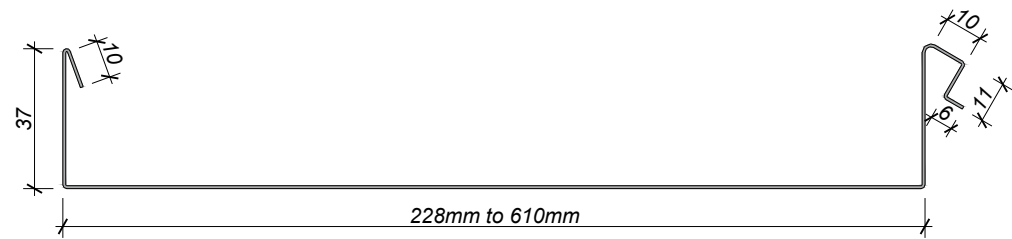


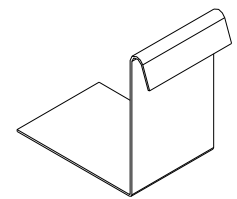
ISOMETRIC VIEW



LOCK SEAM



CROSS SECTION



FIXING CLIP



ARCHITECTURAL
METALFORMERS

smart tray™ Roofing & Cladding

Profile Type:		Lock Seam	
		Smart Tray System Drawings	
Scale:	NTS	Drawing No.	
Date:	2025	LS-01	A

Disclaimer: All details are to be used for indicative purposes only and the designer should consult both the MRM code of practice version 2.2 (2012, E2 and all other relevant building codes. Details of the supporting mechanisms are indicative only. Compliance of the supporting mechanisms is the responsibility of the designer. Construction detail can vary for wall cladding. The underlay is detailed as a single line for simplicity and is indicative only. Building paper type and method of installation should comply with underlay manufacturers recommendations and NZBC regulations.

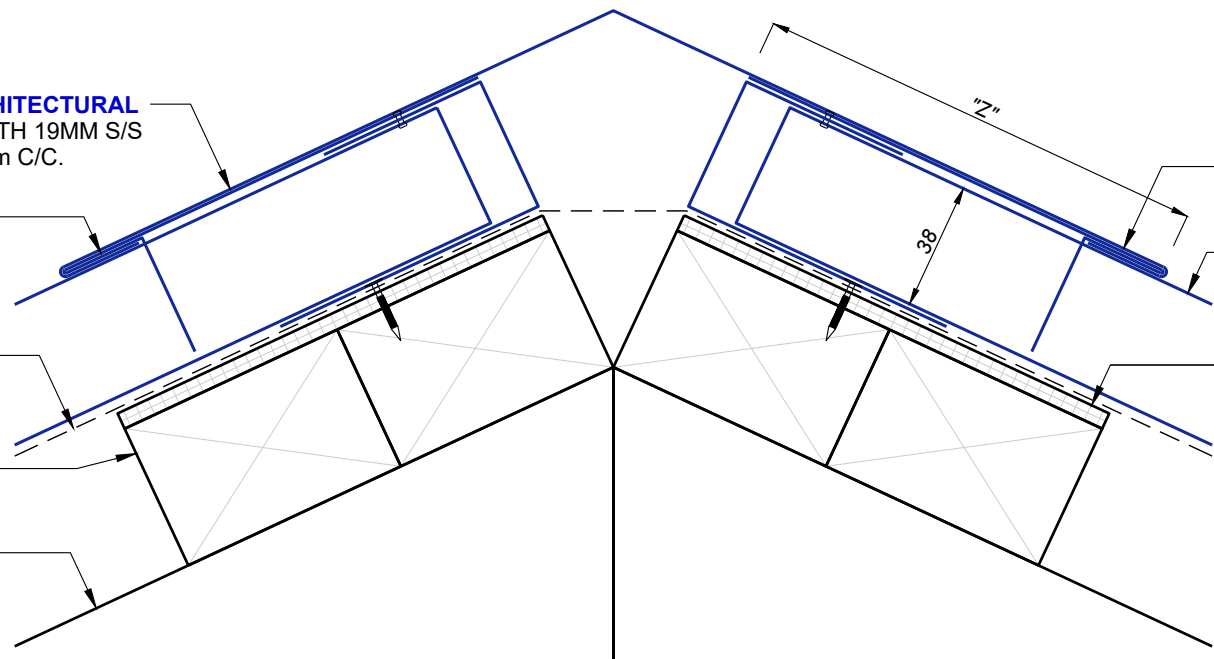
METAL END CAP FLASHING BY **ARCHITECTURAL METALFORMERS**. FIX TO PURLIN WITH 19MM S/S ANNULAR GROOVED NAILS @ 200mm C/C.

METAL TRIM FLASHING BY **ARCHITECTURAL METALFORMERS**. FIX TO END CAP FLASHING WITH RIVETS @ 250mm C/C.

SELECTED COVERTEK ROOFING UNDERLAY BY **ARCHITECTURAL METALFORMERS**.

DOUBLE TIMBER PURLINS TO ARCHITECTS SPECIFICATION.

TIMBER RAFTER/TRUSS TO ARCHITECTS SPECIFICATION.



METAL RIDGE/HIP FLASHING BY **ARCHITECTURAL METALFORMERS**.
 LOCK SEAM METAL ROOF PANELS BY **ARCHITECTURAL METALFORMERS** ON SELECTED COVERTEK UNDERLAY.

CONTINUOUS 5mm CORFLUTE BEARING STRIP TO ALL PURLINS.

"Z" as per Table 7 NZBC E2/AS1

- 130mm width in Low, Medium, High Wind Zones, where roof pitch $\geq 10^\circ$.
- 200mm width for all roof pitches in Very High and Extra High Wind Zones.
- 200mm width in Low, Medium and High Wind Zones where roof pitch $\leq 10^\circ$.



ARCHITECTURAL
METALFORMERS

smart tray™ Roofing & Cladding

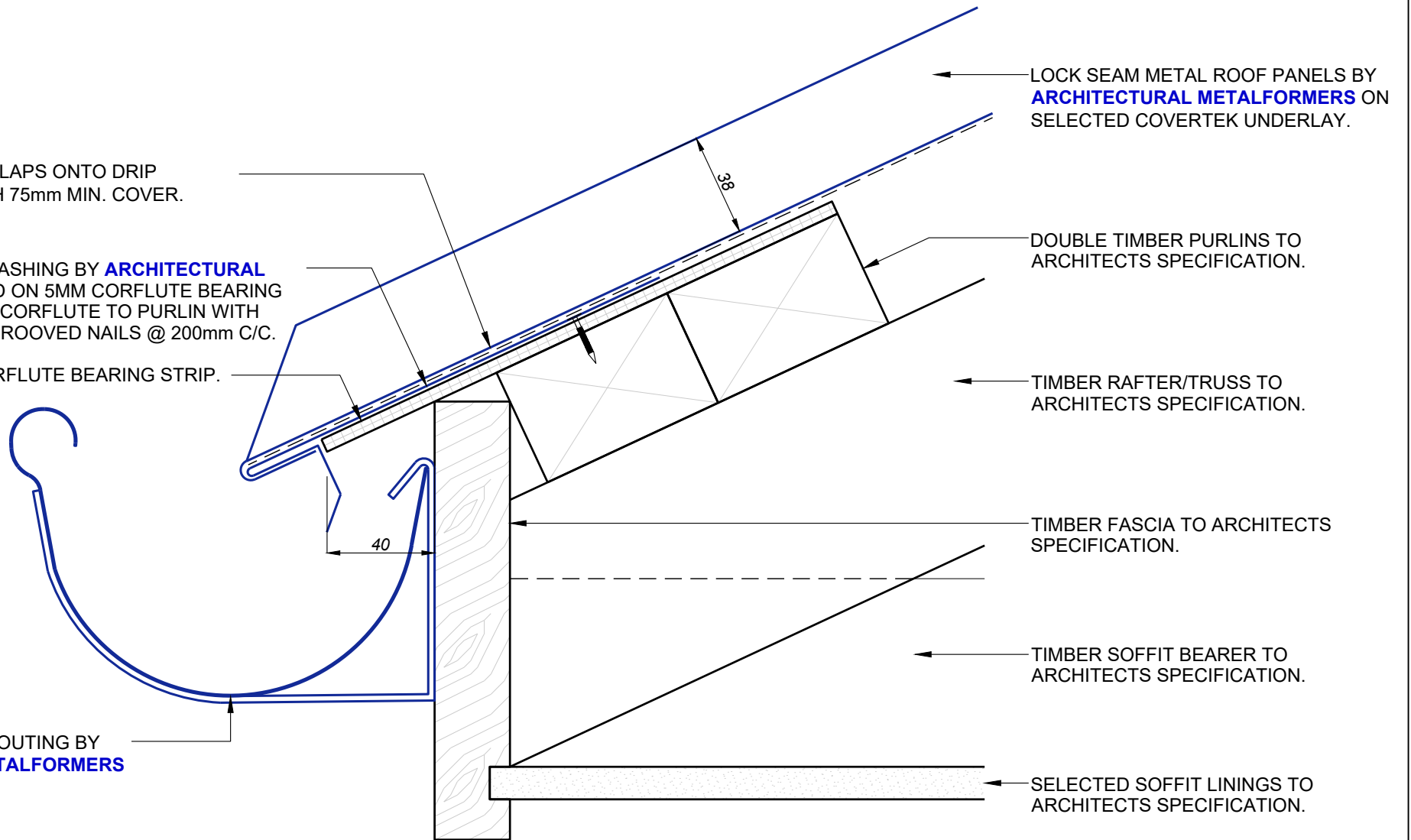
Profile Type:		Lock Seam Roof Hip & Ridge Flashing (Unvented)	
Scale:	NTS	Drawing No.	LS-50
Date:	2025	Revision:	

ROOFING UNDERLAY LAPS ONTO DRIP
EDGE FLASHING WITH 75mm MIN. COVER.

METAL DRIP EDGE FLASHING BY **ARCHITECTURAL
METALFORMERS** LAID ON 5MM CORFLUTE BEARING
STRIP. FIX THROUGH CORFLUTE TO PURLIN WITH
19MM S/S ANNULAR GROOVED NAILS @ 200mm C/C.

CONTINUOUS 5mm CORFLUTE BEARING STRIP.

SELECTED METAL SPOUTING BY
ARCHITECTURAL METALFORMERS
LAID TO FALLS.



LOCK SEAM METAL ROOF PANELS BY
ARCHITECTURAL METALFORMERS ON
SELECTED COVERTEK UNDERLAY.

DOUBLE TIMBER PURLINS TO
ARCHITECTS SPECIFICATION.

TIMBER RAFTER/TRUSS TO
ARCHITECTS SPECIFICATION.

TIMBER FASCIA TO ARCHITECTS
SPECIFICATION.

TIMBER SOFFIT BEARER TO
ARCHITECTS SPECIFICATION.

SELECTED SOFFIT LININGS TO
ARCHITECTS SPECIFICATION.



ARCHITECTURAL
METALFORMERS

smart tray™ Roofing & Cladding

Profile Type:	Lock Seam Roof Drip Edge Flashing (Unvented)		
Scale:	NTS	Drawing No.	LS-51
Date:	2025	Revision:	A

SELECTED METAL TRIM FLASHING BY **ARCHITECTURAL METALFORMERS** FIXED WITH 19mm S/S ANNULAR GROOVED NAILS.

CONTINUOUS 5MM CORFLUTE BEARING STRIP.

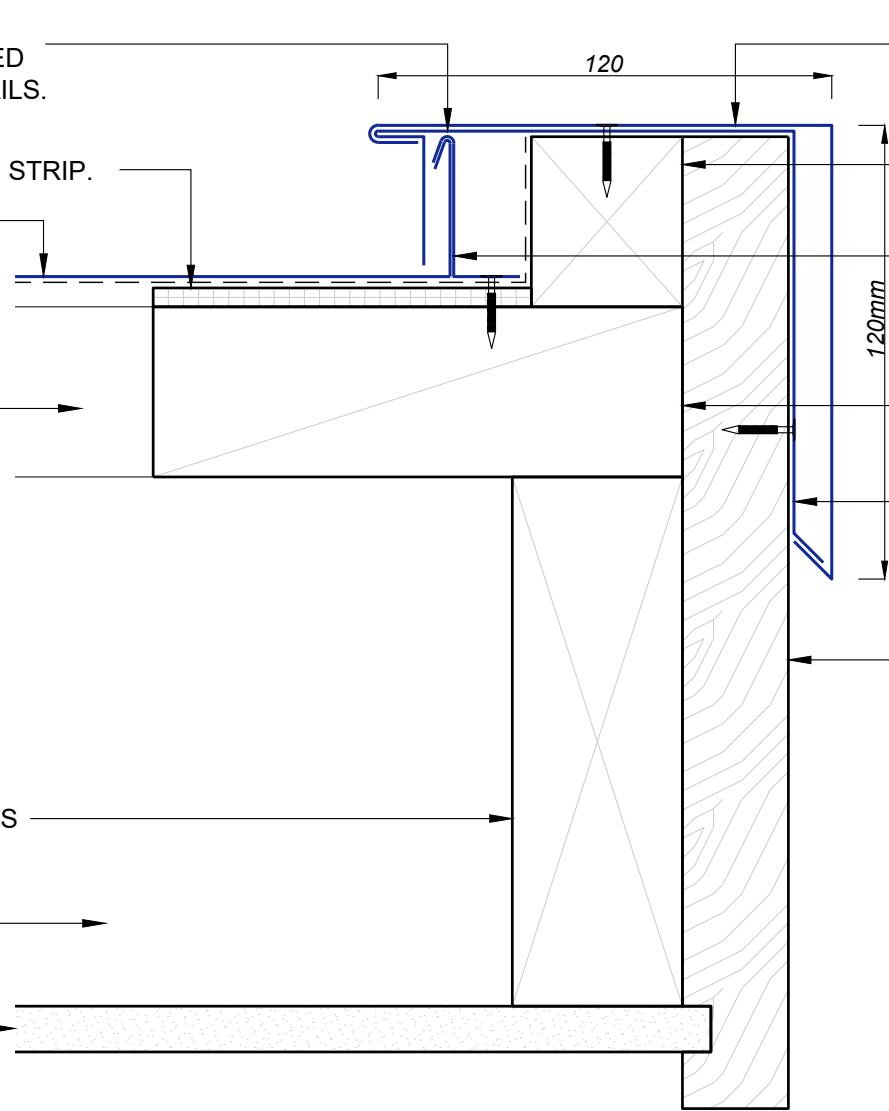
LOCK SEAM METAL ROOF PANELS BY **ARCHITECTURAL METALFORMERS** ON SELECTED COVERTEK UNDERLAY.

TIMBER PURLINS TO ARCHITECTS SPECIFICATION.

TIMBER FLYING RAFTER TO ARCHITECTS SPECIFICATION.

TIMBER OUTRIGGER TO ARCHITECTS SPECIFICATION.

SELECTED SOFFIT LININGS TO ARCHITECTS SPECIFICATION.



SELECTED METAL BARGE FLASHING BY **ARCHITECTURAL METALFORMERS** FIXED OVER CONCEALED CLIP FIXINGS.

45 X 40 TIMBER BATTEN FIXED TO PURLINS TO ARCHITECTS SPECIFICATION.

S/S BRACKET FIXED WITH 19mm S/S ANNULAR GROOVED NAILS.

TIMBER NOGGING AS REQUIRED TO ARCHITECTS SPECIFICATION.

SELECTED METAL TRIM FLASHING BY **ARCHITECTURAL METALFORMERS** FIXED WITH 19mm S/S ANNULAR GROOVED NAILS.

TIMBER BARGE BOARD TO ARCHITECTS SPECIFICATION.



ARCHITECTURAL
METALFORMERS

smart tray™ Roofing & Cladding

Profile Type:

Lock Seam Roof
Barge Detail (Option A)

Scale: NTS

Drawing No.

Revision:

Date: 2025

LS-52

A

SELECTED METAL TRIM FLASHING BY **ARCHITECTURAL METALFORMERS** FIXED WITH 19mm S/S ANNULAR GROOVED NAILS.

CONTINUOUS 5mm CORFLUTE BEARING STRIP.

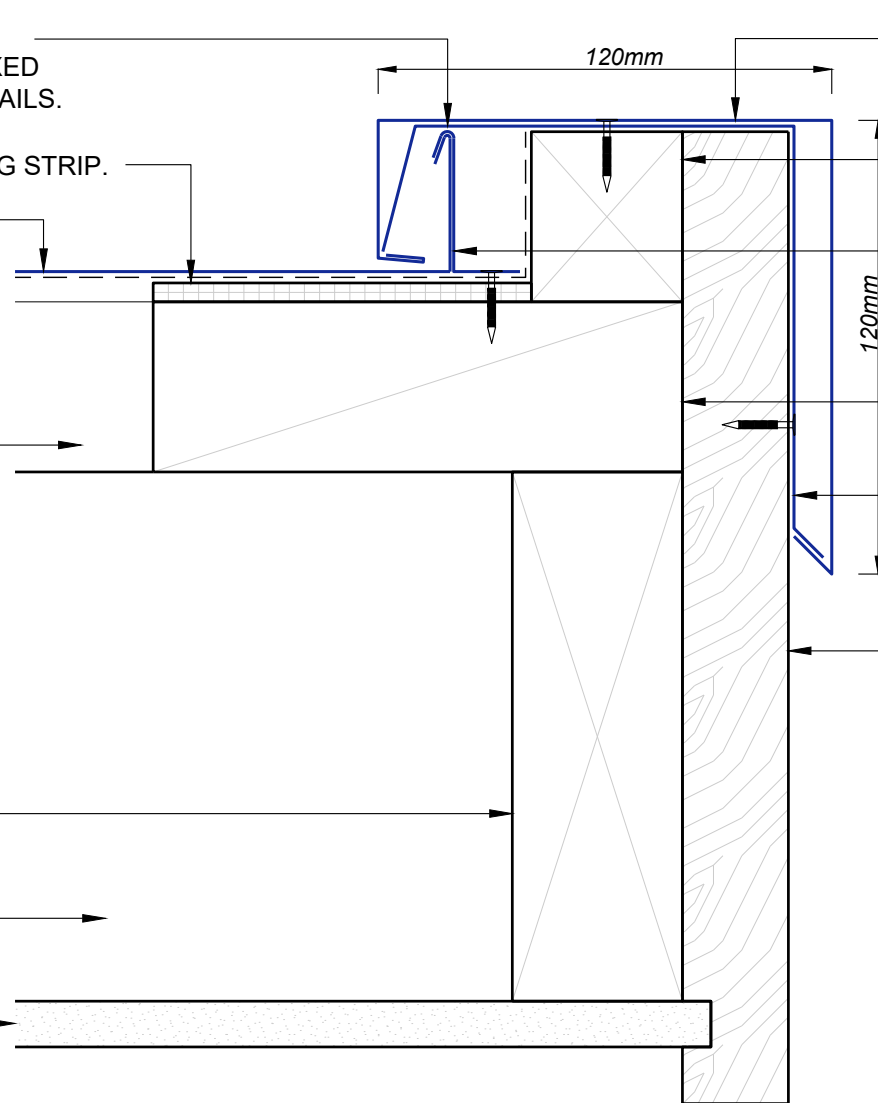
LOCK SEAM METAL ROOF PANELS BY **ARCHITECTURAL METALFORMERS** ON SELECTED COVERTEK UNDERLAY.

TIMBER PURLINS TO ARCHITECTS SPECIFICATION.

TIMBER FLYING RAFTER TO ARCHITECTS SPECIFICATION.

TIMBER OUTRIGGER TO ARCHITECTS SPECIFICATION.

SELECTED SOFFIT LININGS TO ARCHITECTS SPECIFICATION.



SELECTED METAL BARGE FLASHING BY **ARCHITECTURAL METALFORMERS** FIXED OVER CONCEALED CLIP FIXINGS.

45 X 40 TIMBER BATTEN FIXED TO PURLINS TO ARCHITECTS SPECIFICATION.

S/S BRACKET FIXED WITH 19mm S/S ANNULAR GROOVED NAILS.

TIMBER NOGGING AS REQUIRED TO ARCHITECTS SPECIFICATION.

SELECTED METAL TRIM FLASHING BY **ARCHITECTURAL METALFORMERS** FIXED WITH 19mm S/S ANNULAR GROOVED NAILS.

TIMBER BARGE BOARD TO ARCHITECTS SPECIFICATION.



ARCHITECTURAL
METALFORMERS

smart tray™ Roofing & Cladding

Profile Type:

Lock Seam Roof
Barge Detail (Option B)

Scale:

NTS

Drawing No.

LS-53

Revision:

Date:

2025

A

S/S BRACKET FIXED WITH 19mm
S/S ANNULAR GROOVED NAILS.

LOCK SEAM METAL ROOF PANEL BY
ARCHITECTURAL METALFORMERS ON
SELECTED COVERTEK UNDERLAY.

CONTINUOUS 5mm CORFLUTE
BEARING STRIP TO ALL PURLINS.

TIMBER PURLINS TO
ARCHITECTS SPECIFICATION.

TIMBER FLYING RAFTER TO
ARCHITECTS SPECIFICATION.

TIMBER OUTRIGGER TO ARCHITECTS
SPECIFICATION.

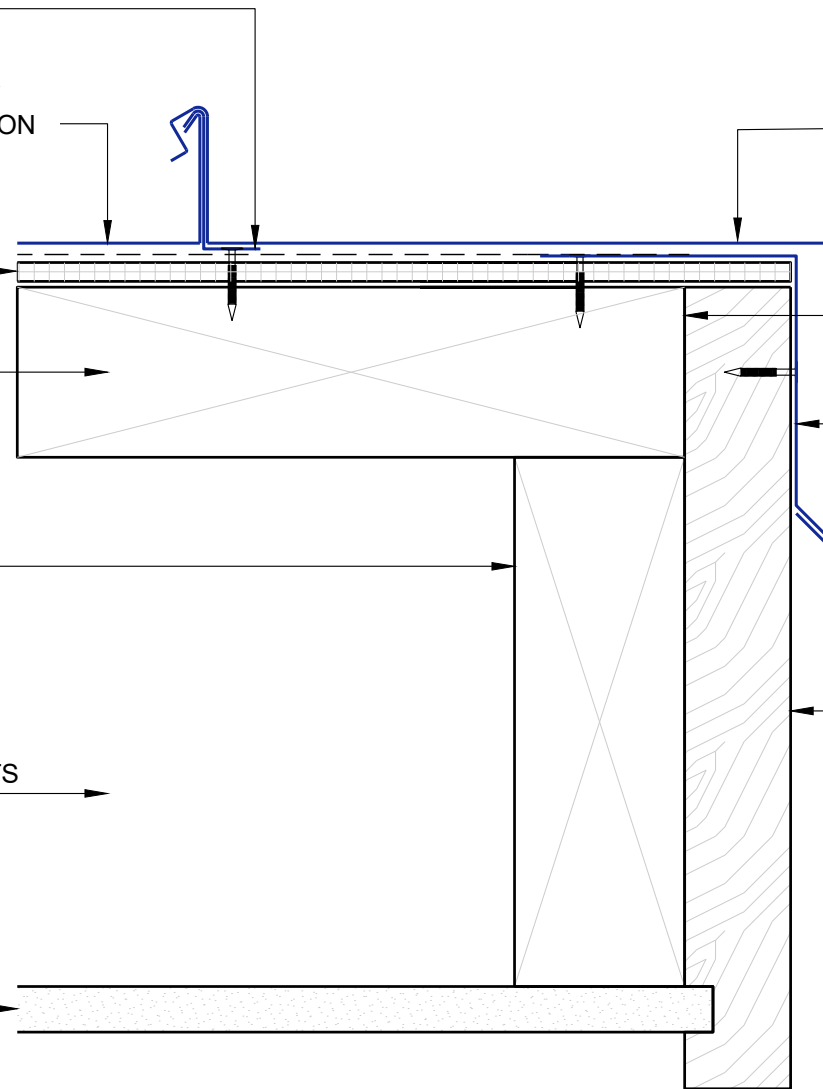
SELECTED SOFFIT LININGS TO
ARCHITECTS SPECIFICATION.

SELECTED METAL BARGE FLASHING BY
ARCHITECTURAL METALFORMERS FIXED
OVER CONCEALED CLIP FIXINGS.

TIMBER NOGGING AS REQUIRED TO
ARCHITECTS SPECIFICATION.

SELECTED METAL TRIM FLASHING BY
ARCHITECTURAL METALFORMERS FIXED
WITH 19mm S/S ANNULAR GROOVED NAILS.

TIMBER BARGE BOARD TO ARCHITECTS
SPECIFICATION.



ARCHITECTURAL
METALFORMERS

smart tray™ Roofing & Cladding

Profile Type:	Lock Seam Roof Barge Detail (Option C)		
Scale:	NTS	Drawing No.	LS-54
Date:	2025	Revision:	A

NOTE: CAVITY BATTENS TO BE 45 X 45mm H3.1 TREATED CASTELLATED STRUCTURAL CAVITY BATTENS FIXED HORIZONTALLY @ 450mm MAX. CENTRES.

LOCK SEAM METAL WALL CLADDING BY **ARCHITECTURAL METALFORMERS** ON SELECTED COVERTEK UNDERLAY.

SELECTED BREATHER TYPE BUILDING WRAP TURNS OUT OVER APRON FLASHING.

45 X 65mm H3.1 TREATED CASTELLATED STRUCTURAL CAVITY BATTEN WITH 3MM FACE REBATE AS REQUIRED FOR CLADDING BUILDUP.

FOLDED CAVITY CLOSER/PANEL STARTER BY **ARCHITECTURAL METALFORMERS**. PUNCHED CAVITY CLOSER PROVIDING 1000mm² OF VENTILATION PER LINEAL METRE.

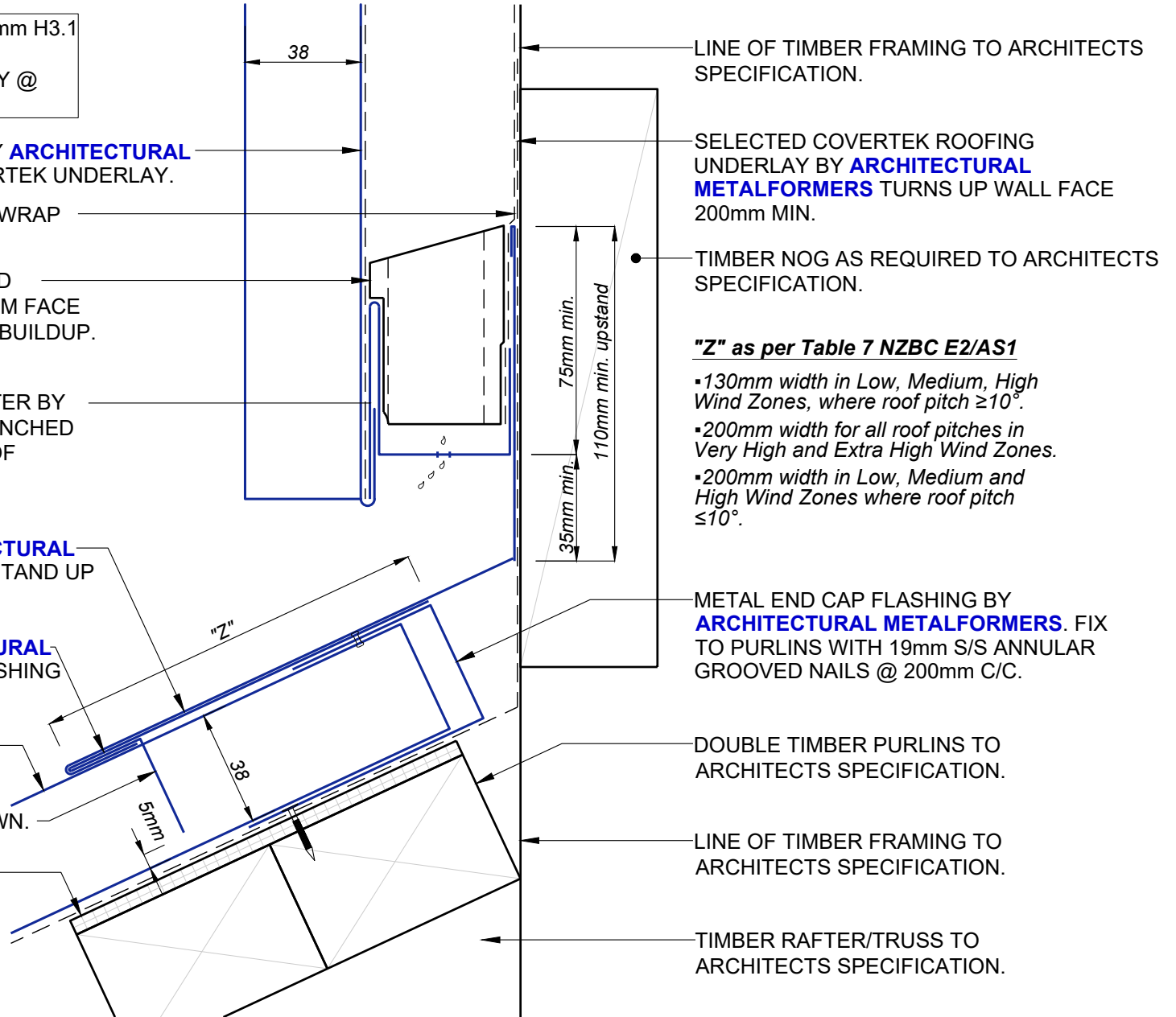
METAL APRON FLASHING BY **ARCHITECTURAL METALFORMERS** WITH 110mm MIN UPSTAND UP WALL BEHIND CLADDING.

METAL TRIM FLASHING BY **ARCHITECTURAL METALFORMERS**. FIX TO END CAP FLASHING WITH RIVETS @ 250mm C/C.

LOCK SEAM METAL ROOF PANELS BY **ARCHITECTURAL METALFORMERS**.

5mm MIN. GAP TO NOTCHED TURN-DOWN.

CONTINUOUS 5mm CORFLUTE BEARING STRIP TO ALL PURLINS.



LINE OF TIMBER FRAMING TO ARCHITECTS SPECIFICATION.

SELECTED COVERTEK ROOFING UNDERLAY BY **ARCHITECTURAL METALFORMERS** TURNS UP WALL FACE 200mm MIN.

TIMBER NOG AS REQUIRED TO ARCHITECTS SPECIFICATION.

"Z" as per Table 7 NZBC E2/AS1

- 130mm width in Low, Medium, High Wind Zones, where roof pitch $\geq 10^\circ$.
- 200mm width for all roof pitches in Very High and Extra High Wind Zones.
- 200mm width in Low, Medium and High Wind Zones where roof pitch $\leq 10^\circ$.

METAL END CAP FLASHING BY **ARCHITECTURAL METALFORMERS**. FIX TO PURLINS WITH 19mm S/S ANNULAR GROOVED NAILS @ 200mm C/C.

DOUBLE TIMBER PURLINS TO ARCHITECTS SPECIFICATION.

LINE OF TIMBER FRAMING TO ARCHITECTS SPECIFICATION.

TIMBER RAFTER/TRUSS TO ARCHITECTS SPECIFICATION.



smart tray™ Roofing & Cladding

Profile Type:	Lock Seam Roof Apron Flashing (Option A)		
Scale:	NTS	Drawing No.	LS-55
Date:	2025	Revision:	A

NOTE: CAVITY BATTENS TO BE 45 X 45mm H3.1 TREATED CASTELLATED STRUCTURAL CAVITY BATTENS FIXED HORIZONTALLY @ 450mm MAX. CENTRES.

LOCK SEAM METAL WALL CLADDING BY ARCHITECTURAL METALFORMERS ON SELECTED COVERTEK UNDERLAY.

SELECTED BREATHER TYPE BUILDING WRAP TURNS OUT OVER APRON FLASHING.

45 X 65mm H3.1 TREATED CASTELLATED STRUCTURAL CAVITY BATTEN WITH 3mm FACE REBATE AS REQUIRED FOR CLADDING BUILDUP.

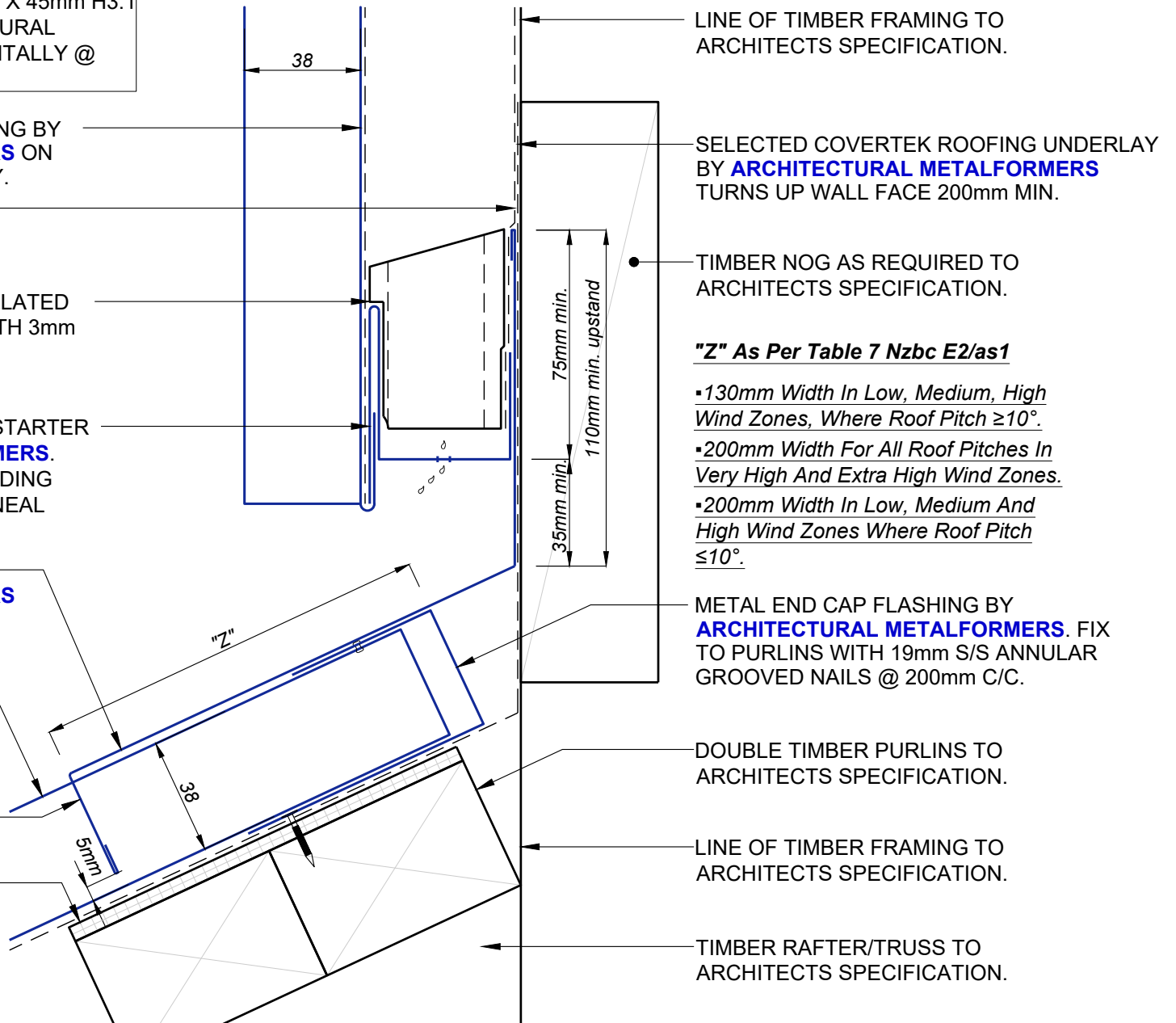
FOLDED CAVITY CLOSER/PANEL STARTER BY ARCHITECTURAL METALFORMERS. PUNCHED CAVITY CLOSER PROVIDING 1000mm² OF VENTILATION PER LINEAL METRE.

METAL APRON FLASHING BY ARCHITECTURAL METALFORMERS WITH 110mm MIN UPSTAND UP WALL BEHIND CLADDING.

LOCK SEAM METAL ROOF PANELS BY ARCHITECTURAL METALFORMERS.

5mm MIN. GAP TO NOTCHED TURN-DOWN.

CONTINUOUS 5mm CORFLUTE BEARING STRIP TO ALL PURLINS.



LINE OF TIMBER FRAMING TO ARCHITECTS SPECIFICATION.

SELECTED COVERTEK ROOFING UNDERLAY BY ARCHITECTURAL METALFORMERS TURNS UP WALL FACE 200mm MIN.

TIMBER NOG AS REQUIRED TO ARCHITECTS SPECIFICATION.

"Z" As Per Table 7 Nzbc E2/as1

•130mm Width In Low, Medium, High Wind Zones, Where Roof Pitch $\geq 10^\circ$.

•200mm Width For All Roof Pitches In Very High And Extra High Wind Zones.

•200mm Width In Low, Medium And High Wind Zones Where Roof Pitch $\leq 10^\circ$.

METAL END CAP FLASHING BY ARCHITECTURAL METALFORMERS. FIX TO PURLINS WITH 19mm S/S ANNULAR GROOVED NAILS @ 200mm C/C.

DOUBLE TIMBER PURLINS TO ARCHITECTS SPECIFICATION.

LINE OF TIMBER FRAMING TO ARCHITECTS SPECIFICATION.

TIMBER RAFTER/TRUSS TO ARCHITECTS SPECIFICATION.



ARCHITECTURAL METALFORMERS

smart tray™ Roofing & Cladding

Profile Type:		Lock Seam Roof Apron Flashing (Option B)	
Scale:	NTS	Drawing No.	LS-56
Date:	2025	Revision:	A

S/S BRACKET FIXED WITH
19mm S/S ANNULAR
GROOVED NAILS.

CLINCHED GRAB STRIP SEALED
WITH SIKA AT FACADE
SEALANT.

TIMBER PURLIN
CONTINUOUS BOTH
SIDES OF COP.

TIMBER NOGGING AS REQUIRED.

CONTINUOUS 5mm
CORFLUTE BEARING
STRIP TO ALL PURLINS.

200
SELECTED CHANGE OF PITCH
FLASHING BY
**ARCHITECTURAL
METALFORMERS.**

SELECTED METAL FLASHING BY
ARCHITECTURAL METALFORMERS
FIXED WITH 25mm TEK SCREWS.

LOCK SEAM METAL ROOF PANEL BY
ARCHITECTURAL METALFORMERS
ON SELECTED COVERTEK UNDERLAY.

30

38



ARCHITECTURAL
METALFORMERS

smart tray™ Roofing & Cladding

Profile Type:

Lock Seam Roof
Change of Pitch Flashing

Scale:

NTS

Drawing No.

LS-57

Revision:

A

Date:

2025

S/S BRACKET FIXED WITH
19mm S/S ANNULAR
GROOVED NAILS.

CONTINUOUS 5mm
CORFLUTE BEARING
STRIP.

TIMBER VALLEY BOARDS TO
ARCHITECTS SPECIFICATION.

TIMBER VALLEY NOGGING AS
REQUIRED TO ARCHITECTS
SPECIFICATION.

250mm WIDTH @ 8° MIN ROOF
PITCH

25M² MINIMUM CATCHMENT
AREA

160mm - 249mm WIDTH @ 12.5° MIN ROOF
PITCH

16m² MINIMUM CATCHMENT AREA

LOCK SEAM METAL ROOF
PANEL BY **ARCHITECTURAL
METALFORMERS** ON
SELECTED COVERTEK
UNDERLAY.

SELECTED COVERTEK
UNDERLAY LAPPED
OVER CORFLUTE.

DOUBLE TIMBER VALLEY
PURLINS CONTINUOUS
BOTH SIDES OF GUTTER.

DROPPED METAL FLASHING
BY **ARCHITECTURAL
METALFORMERS** ON
SELECTED COVERTEK
UNDERLAY.



ARCHITECTURAL
METALFORMERS

smart tray™ Roofing & Cladding

Profile Type:

Lock Seam Roof
Dropped Valley

Scale: NTS

Drawing No.

Revision:

Date: 2025

LS-58

A

SELECTED COVERTEK UNDERLAY.

S/S BRACKET
FIXED WITH 19mm
S/S ANNULAR
GROOVED NAILS.

LOCK SEAM METAL ROOF PANEL BY
ARCHITECTURAL METALFORMERS
ON SELECTED COVERTEK
UNDERLAY.

250mm WIDTH @ 8° MIN ROOF
PITCH
25m² MINIMUM CATCHMENT
AREA
160mm - 249mm WIDTH @ 12.5° MIN ROOF
PITCH
16m² MINIMUM CATCHMENT AREA

CLINCHED GRAB STRIP SEALED
WITH SIKA AT FACADE SEALANT.

TIMBER VALLEY PURLIN
CONTINUOUS BOTH SIDES
OF GUTTER.

METAL VALLEY FLASHING BY
ARCHITECTURAL METALFORMERS
ON SELECTED COVERTEK UNDERLAY.



ARCHITECTURAL
METALFORMERS

smart tray™ Roofing & Cladding

Profile Type:

Lock Seam Roof
Flat Valley

Scale: NTS

Drawing No.

Date: 2025

LS-59

Revision:

A